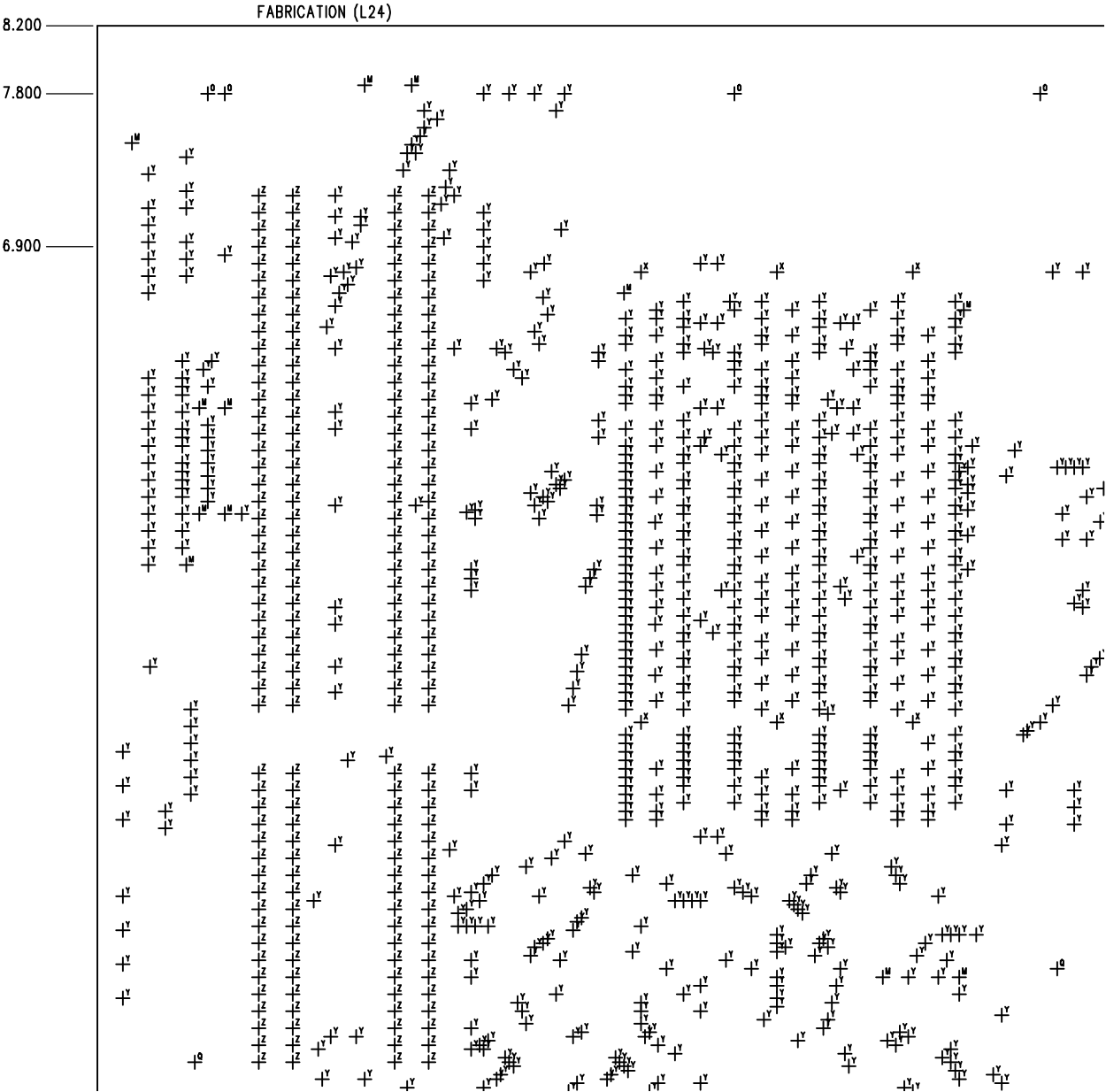
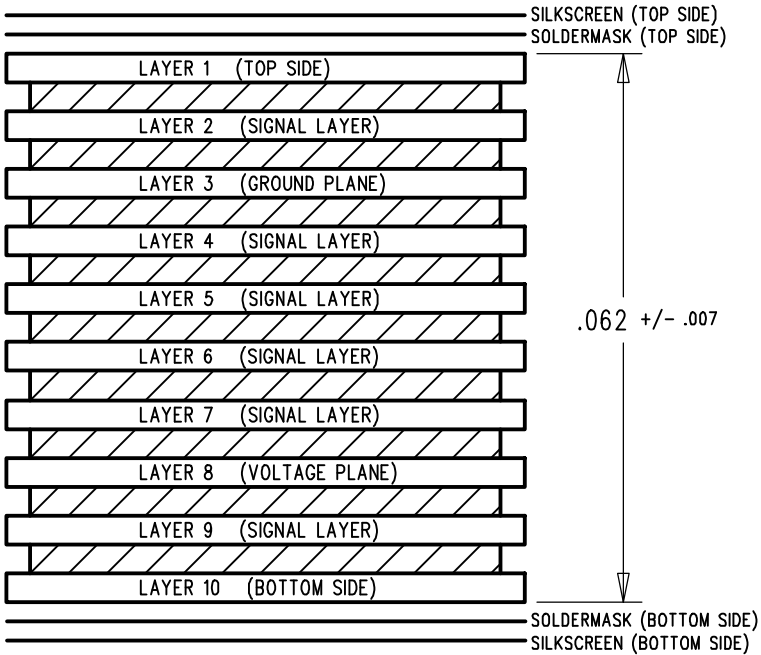
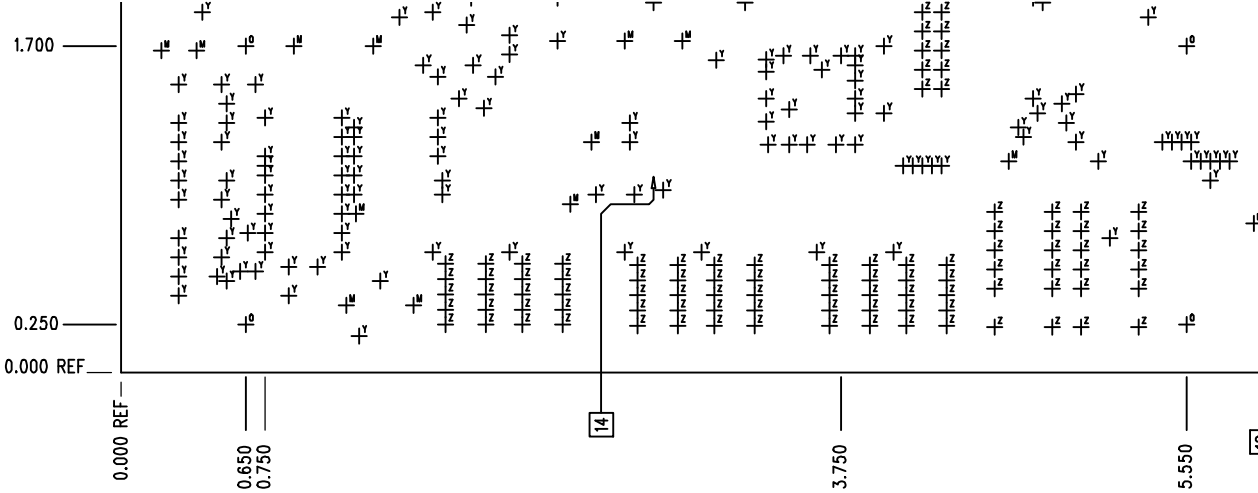


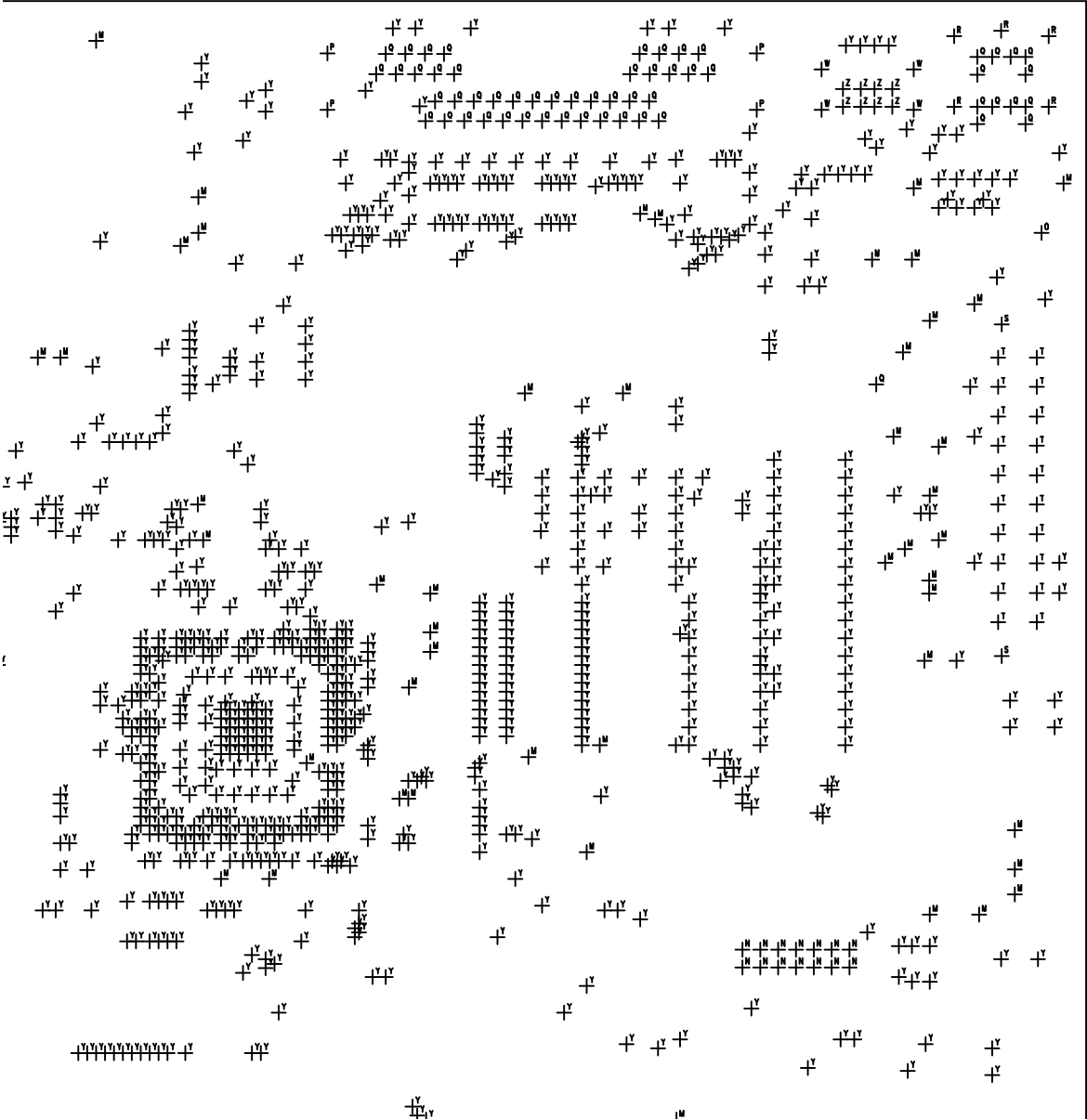
SIZE	QTY	SYM	PLTD
24	80	M	PLTD
42	14	N	PLTD
156	11	O	PLTD
130	4	P	PLTD
45	58	Q	PLTD
97	5	R	PLTD
120	2	S	NPLTD
60	20	T	PLTD
95	4	U	NPLTD
80	2	V	NPLTD
91	4	W	PLTD
97	6	X	NPLTD
13	1694	Y	PLTD
37	634	Z	PLTD





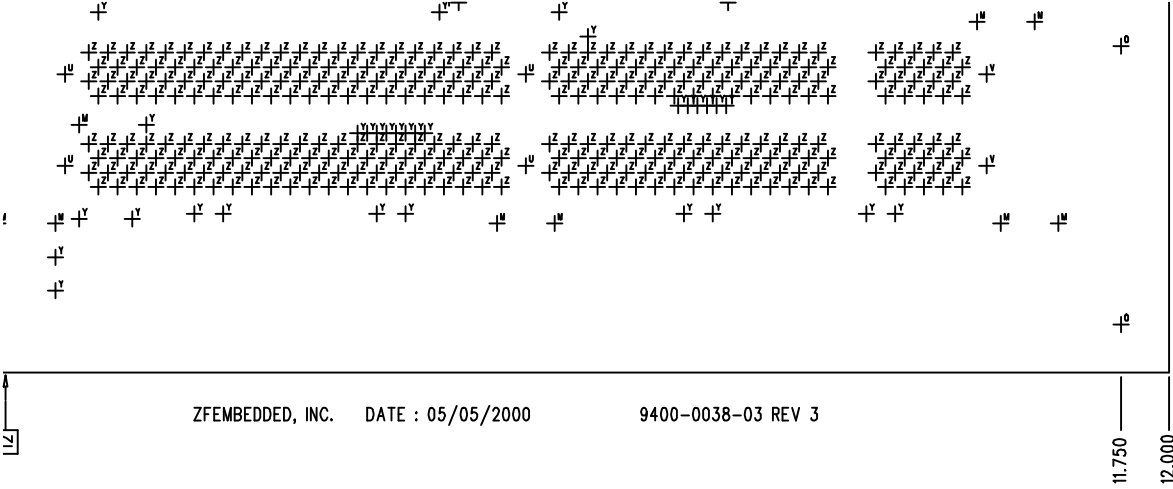
LAYER DETAIL
10 LAYER





NOTES : (UNLESS SPECIFIED OTHERWISE.)

- 1) ALL DIMENSIONS ARE IN INCHES.TOLERANCE IS +/- 0.005
CONFORMING TO IPC-A-600
- 2) HOLE SIZES ARE SPECIFIED IN THOUSANDTHS.
HOLE SIZES APPLY AFTER PLATING.
HOLE SIZE TOLERANCE TO BE ± 0.003 ,
UNLESS SPECIFIED OTHERWISE.
PLATING TO BE 0.0010 MINIMUM.
- 3) MATERIAL : FR-4-2 NATURAL EPOXY/FIBERGLASS
0.5 OZ. COPPER ALL LAYERS.
2 SIDES PLATED.
FINISHED THICKNESS : 0.062 $\frac{+ 0.006}{- 0.002}$



- 4) APPLY SOLDERMASK OVER BARE COPPER, BOTH SIDES.
FINISH ALL EXPOSED COPPER SURFACES WITH 60/40% TIN/LEAD SOLDER, 100u" TO 1000u".
- 5) THE LOCATION OF THE MARKING SHOULD BE ON THE SURFACE OF THE PCB, NOT THE EDGE.
- 6) APPLY SOLDERMASK TO COMPONENT SIDE AND SOLDER SIDE, USING
☐ PC401 OR EQUIVALENT.
☒ LIQUID PHOTO IMAGEABLE.
☐ DRY FILM.
COLOR : GREEN.
USE SEPARATE FILM FOR COMPONENT SIDE AND SOLDER SIDE SOLDERMASKS.
FABRICATOR SHALL MAKE NECESSARY MODIFICATIONS TO SOLDERMASK PHOTO PLOT FILES FOR OPTIMAL SOLDERMASK COVERAGE BETWEEN FINE PITCH COMPONENT LEADS.
- 7) APPLY LEGEND TO COMPONENT SIDE USING NON-CONDUCTIVE EPOXY INK.
COLOR : WHITE.
FABRICATOR SHALL MAKE NECESSARY MODIFICATIONS TO LEGEND PHOTO PLOT FILES TO ENSURE NO LEGEND INK COVERS ANY COMPONENT PAD OR VIA PAD.
- 8) PCB SHALL BE CLEAN AND FREE FROM DIRT, OIL, FINGERPRINTS, CORROSION, AND ANY OTHER FOREIGN MATERIAL.
- 9) MODIFIED PHOTO PLOT FILES ARE TO BE RETURNED BEFORE ORDER DELIVERED.
- 10) FABRICATOR HAS APPROVAL TO REMOVE NON-FUNCTIONAL PADS FROM INNER LAYERS.
- 11) BOW AND TWIST SHALL BE LESS THAN 0.005" PER INCH.
- 12) ALL PRINTED CIRCUIT BOARD NETS SHALL BE 100% ELECTRICALLY TESTED FOR OPENS AND SHORTS. MARK TEST VERIFICATION STAMP APPROXIMATELY WHERE SHOWN, ALONG EDGE OF PCB, USING WHITE INK.
- 13) FABRICATION OF P.W.B. TO COMPLY WITH IPC-A-600, CLASS II , CURRENT REVISION.
- 14) CUT J23 PIN 6.

				APPROVALS		DATE		ZF Embedded, Inc.		1052 Elwell Court Palo Alto,CA 94303 (650) 965-3800		
				DRAWN	Silvi Keskula		05/05/2000					
				CHECKED	Kaido Kevvai		05/05/2000					
NOTICE : CONFIDENTIAL MATERIAL Reproduction forbidden without the specific written permission of ZF Embedded, Inc.				PROJ MGR ARTEC DG, LTD				MACHZ EVALUATION 1 FABRICATION				RELEASE 01
				CLIENT ZF Embedded, Inc.		SIZE E						