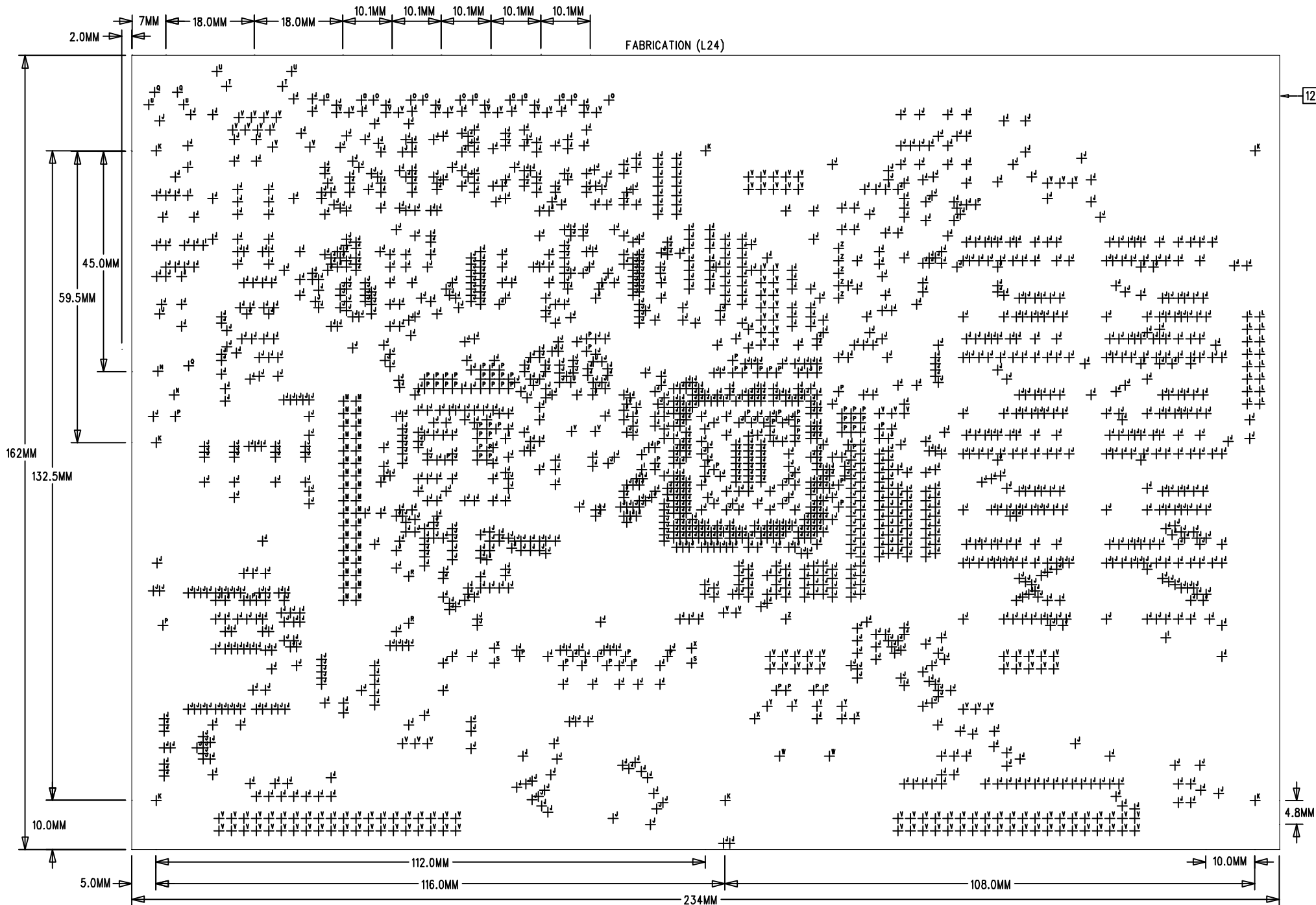
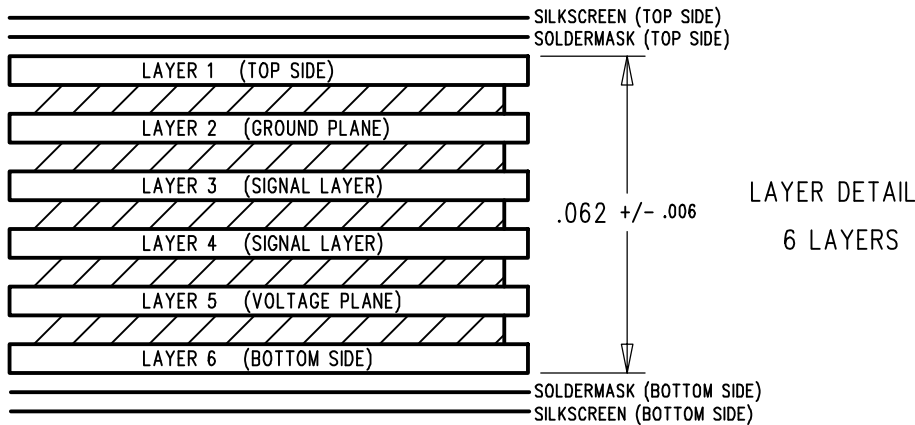


SIZE	QTY	SYM	PLTD
24	6	I	PLTD
13	1892	J	PLTD
125	7	K	PLTD
39	16	L	PLTD
42	34	M	PLTD
105	2	N	PLTD
60	12	O	NPLTD
14	75	P	PLTD
50	3	Q	PLTD
22	2	R	NPLTD
67	2	S	NPLTD
128	2	T	NPLTD
62	4	U	PLTD
37	162	V	PLTD
150	2	W	NPLTD
90	4	X	NPLTD
60	4	Y	PLTD
45	6	Z	PLTD



- NOTES : (UNLESS SPECIFIED OTHERWISE.)
- 1) ALL DIMENSIONS ARE IN INCHES.TOLERANCE IS +/- 0.005 CONFORMING TO IPC-A-600. GIVEN MECHANICAL DIMENSIONS ARE IN MILLIMETRES.
 - 2) HOLE SIZES ARE SPECIFIED IN THOUSANDTHS. HOLE SIZES APPLY AFTER PLATING. HOLE SIZE TOLERANCE TO BE ± 0.003 , UNLESS SPECIFIED OTHERWISE. PLATING TO BE 0.0010 MINIMUM.
 - 3) MATERIAL : FR-4-2 NATURAL EPOXY/FIBERGLASS
0.5 OZ. COPPER ALL LAYERS.
2 SIDES PLATED.
FINISHED THICKNESS : 0.062 ± 0.006
 $- 0.006$
 - 4) APPLY SOLDERMASK OVER BARE COPPER, BOTH SIDES.
FINISH ALL EXPOSED COPPER SURFACES WITH 60/40% TIN/LEAD SOLDER, 100u" TO 1000u".
 - 5) THE LOCATION OF THE MARKING SHOULD BE ON THE SURFACE OF THE PCB, NOT THE EDGE.
 - 6) APPLY SOLDERMASK TO COMPONENT SIDE AND SOLDER SIDE, USING
☐ PC401 OR EQUIVALENT.
☒ LIQUID PHOTO IMAGEABLE.
☐ DRY FILM.
COLOR : GREEN.
USE SEPARATE FILM FOR COMPONENT SIDE AND SOLDER SIDE SOLDERMASKS.
FABRICATOR SHALL MAKE NECESSARY MODIFICATIONS TO SOLDERMASK PHOTO PLOT FILES FOR OPTIMAL SOLDERMASK COVERAGE BETWEEN FINE PITCH COMPONENT LEADS.
 - 7) APPLY LEGEND TO COMPONENT SIDE USING NON-CONDUCTIVE EPOXY INK. COLOR : WHITE.
FABRICATOR SHALL MAKE NECESSARY MODIFICATIONS TO LEGEND PHOTO PLOT FILES TO ENSURE NO LEGEND INK COVERS ANY COMPONENT PAD OR VIA PAD.
 - 8) PCB SHALL BE CLEAN AND FREE FROM DIRT, OIL, FINGERPRINTS, CORROSION, AND ANY OTHER FOREIGN MATERIAL.
 - 9) MODIFIED PHOTO PLOT FILES ARE TO BE RETURNED BEFORE ORDER DELIVERED.
 - 10) FABRICATOR HAS APPROVAL TO REMOVE NON-FUNCTIONAL PADS FROM INNER LAYERS.
 - 11) BOW AND TWIST SHALL BE LESS THAN 0.005" PER INCH.
 - 12) ALL PRINTED CIRCUIT BOARD NETS SHALL BE 100% ELECTRICALLY TESTED FOR OPENS AND SHORTS. MARK TEST VERIFICATION STAMP APPROXIMATELY WHERE SHOWN, ALONG EDGE OF PCB, USING WHITE INK.
 - 13) FABRICATION OF P.W.B. TO COMPLY WITH IPC-A-600, CLASS II , CURRENT REVISION.



ZF LINUX DEVICES, INC. DATE : 11/6/2000 9400-0050-00

NOTICE : CONFIDENTIAL MATERIAL
Reproduction forbidden without the specific
written permission of Artec Design Group

APPROVALS		DATE	ZF Linux Devices, Inc. 1052 Ellwell Court Palo Alto, CA 94303 (650) 965-3800			
DRAWN:	Elli Puusepp	11/6/2000				
CHECKED:	Kaido Kevvai	11/6/2000	LD NDD FABRICATION			
PROJ MGR:	ARTEC DG					
CLIENT:	ZF Linux Devices, Inc.	SIZE B	DRAWING NUMBER 9400-0050-00-X4	SCALE 1 : 1	SHEET 1 OF 1	RELEASE 01 REVISION 4